

*The Experts' Choice!*

The features we put into WinList™ come straight from the folks who use the product every day, providing real benefits for real-world applications. Whether it's publication-quality graphics to present your work in the best possible light or better ways to select panels of files for analysis to save you time—we listen. WinList™ is designed to be efficient and accurate, while offering unparalleled power and flexibility for your data analysis

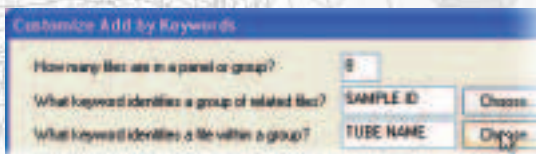
## Features:

- ▶ Unparalleled N-Color Compensation™
- ▶ Keyword-based File Selection
- ▶ Reusable Analysis Protocols
- ▶ Quick and Easy Histogram Creation
- ▶ Intuitive Regions and Gating
- ▶ Separate Multi-page Workspace and Report
- ▶ Flexible Database System
- ▶ Scriptable Batch Processing and Macros
- ▶ Publication-Quality Graphics
- ▶ Popular Export Formats
- ▶ Integration with ModFit LT™
- ▶ Exceptional Tech Support
- ▶ Extensive Library of Video Tutorials
- ▶ Fully Illustrated User Guide
- ▶ Optional 3D Graphics

## Efficient to Use

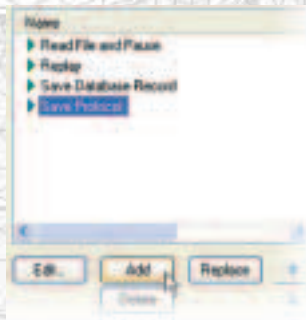
Great software has to help you get your work done as efficiently as possible, and in data analysis nothing comes close to **WinList™**. Set up your analysis protocols once, select data files automatically based on experiment keywords, and drive the analysis with scriptable batch processing.

- Reusable Analysis Protocols and Bundles recreate your entire analysis—histograms, gates, results, reports, and copies of your data files. Your IT department will love the idea of archiving your analysis in a single zip file, the standard archive file format!
- Keyword-based File Selection and Grouping greatly simplifies file selection. Not only does this save time, but it also greatly reduces potential errors in the selection process.
- Quick and Easy Histogram Creation allows you to create one or dozens of plots in just a few clicks.
- Scriptable Batch Processing and Macros record a sequence of steps just once and replay the sequence anytime you need to repeat the actions.
- Separate Multi-page Workspace and Report let you focus on your analysis and presentation independently.



▲ When you specify the number of files in a panel and a few keywords, WinList™ can group related files together and order them appropriately for your analysis.

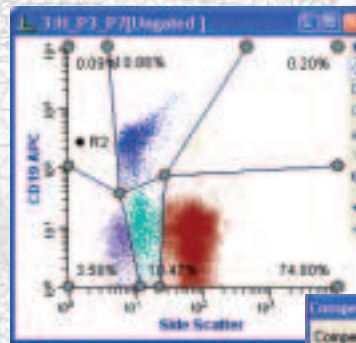
Customize your batch processing by choosing actions from an extensive library of commands. WinList™ makes it easy to define what you want to happen and to control the order of actions, giving it great flexibility to fit the needs of your lab.



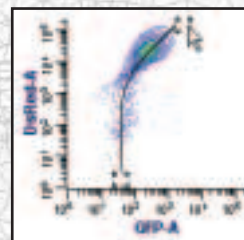
## Accurate

When you're choosing an analysis tool, you need to be certain you can trust the results it produces. **WinList™** is rigorously tested for functionality and accuracy with a comprehensive validation suite. With **WinList™**, you're getting a rock-solid, comprehensive toolkit you can depend on.

- NStat regions define any number of rows and columns without the limits of rectilinear **QuadStats™**—yet another WinList™ innovation.
- N-Color Compensation™ correctly compensates data from today's multi-parameter instruments without cumbersome “high-low” gating strategies.
- HyperLog™ provides a consistent, easily-to-interpret view of compensated data.



◀ You can easily adjust the NStat region to partition the histogram into real populations. Each vertex can be moved independently to conform to the distributions in your data.



▲ To make manual adjustments, just position “Trace Lines” through the centers of populations. It's really that simple!



▲ Setting up compensation in WinList™ requires just a few mouse clicks. Load a single-color control, select the Trace Line that represents that control, and you're ready to move on to the next control. It's fast, accurate, and elegantly simple-to-use.

## Support and Expertise

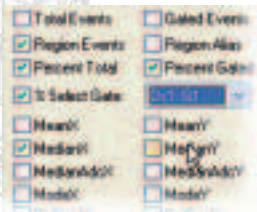
One of the end-user benefits most appreciated by **WinList™** users comes from the company that built the software: Verity Software House. With decades of experience and a friendly, well-trained crew, the support team at VSH is driven by customer satisfaction. If they don't know the answer, they have unprecedented access to programmers and experts in the field.

- Exceptional tech support, no restrictions, no fees.
- Designed by C. Bruce Bagwell, MD, Ph.D., a recognized expert in DNA cell cycle modeling and flow cytometry data analysis for over 30 years.
- With over 25 years in the industry, Verity Software House has a proven track record of excellence.

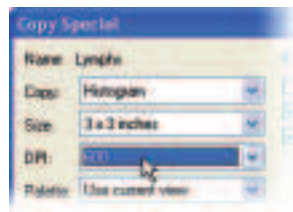
## Flexible and Powerful

Every laboratory has a unique set of needs when it comes to flow cytometry analysis. Software that forces you into one approach or limits your options will never be able to respond to your individual requirements. That's why **WinList™** is designed to be flexible—a tool that lets you approach analysis in a way that suits you.

- Calculated parameters can be created from an extensive set of built-in functions.
- Use the FCOM function to present and quantify phenotyping results for multi-parameter data.
- Database any statistic that **WinList™** generates.
- Create clean and attractive reporting layouts that update automatically as your analysis changes.
- Generate publication-quality graphics for the exacting demands of professional journals and publications.
- Export reports to PDF files.
- Export listmode files with compensation, calculated parameters, and gating in FCS and ASCII-text formats.
- Open files from a complete panel for simultaneous analysis and comparison.
- Link analysis regions for identical gating across multiple data files.



▲ Choose from a broad array of statistics to display and database.



▲ It's easy to get high-quality graphics from **WinList™**. Just select the target size and resolution, and **WinList™** generates perfect images to supplement your manuscripts, slide shows, and publications.

## Proven Performance

There is a good reason that **WinList™** has the longest track record of any listmode analysis software: it's simply the best. A foundation of major labs for over a decade, **WinList™** is the cornerstone that runs day after day, year after year, providing great tools at a great price.

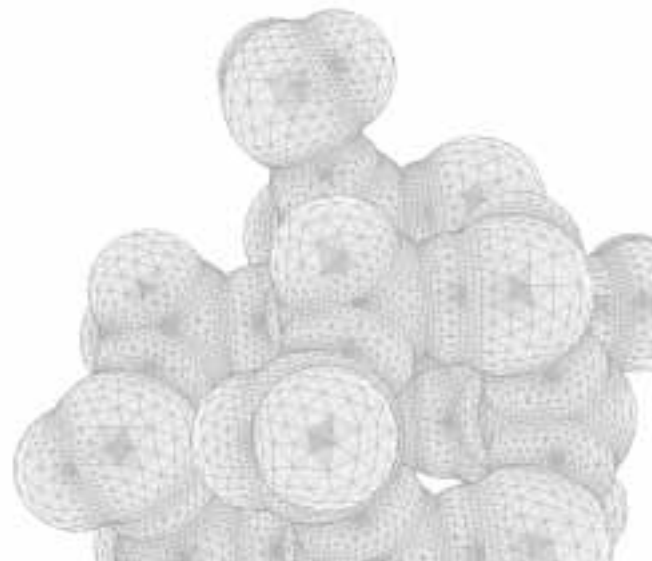
### Tested and Retested

The production team at Verity Software House wants to make sure that before a new version ships, it has been extensively and rigorously tested for functionality and accuracy. We develop a sophisticated set of tests for every subsystem in **WinList™**, whether it's opening FCS files from every known vendor or providing accurate statistics. Tests are run and re-run, letting us find the bugs before we hand it over to our loyal users—yet another reason why **WinList™** is the proven leader in the field.

*"There are several software programs available that can be used to analyze flow cytometry data. I have used **WinList™** since the very first version and found no other software as comprehensive and easy to use."*

~ Carleton C. Stewart,  
Emeritus Director of  
Roswell Park Cancer Institute

Cutting Edge Software.  
Total Commitment.  
[www.vsh.com](http://www.vsh.com)



# The Experts' Choice

*"We are a high volume, clinical flow lab with many **WinList™** users, and we have tested all of the commercially available listmode analysis programs. Only **WinList™** with its unstructured yet intuitive approach provides the robust flexibility, utility and reliability that allow us to get through our work efficiently."*

~ David Miller, MD, Esoterix,  
a subsidiary of Laboratory  
Corporation of America

*"I've been using **WinList™** since version 2.0 (1992). I've never tried any other off-line analysis software because I've never had to. Using this application is why I do flow cytometry; if I didn't have it to use, I'd be doing something else."*

~ Marc Langweiler, DVM, PhD,  
Dartmouth-Hitchcock Medical Center



 Printed on 100% recycled material using wind-generated power.

For research use only. Not for use in therapeutic and diagnostic procedures.  
WinList™, N-Color Compensation™, and HyperLog™ are trademarks of Verity Software House.  
Copyright 2008 Verity Software House. All rights reserved.



# Verity

Software House

PO Box 247

Topsham, ME 04086-0247, USA

Ph: 207.729.6767 • Fax: 207.729.5443

Toll-free: 877.729.6767

[www.vsh.com](http://www.vsh.com)